

mySAP PLM

“The implementation of SAP Work Clearance Management was one of the most important and basic functions in the introduction of SAP R/3 when the project began in spring 1997. The project went live in December 1998 and since 1999, Ringhals has successfully planned and safely performed maintenance activities in all four units. Today, SAP Work Clearance Management is accepted as a natural modern maintenance tool in daily work.”

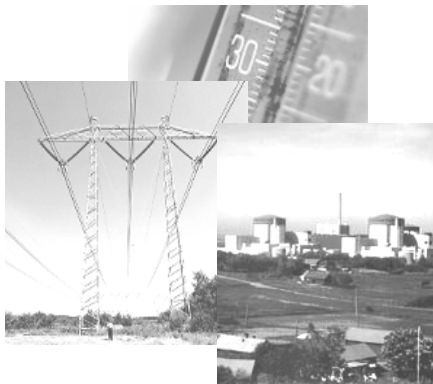
Owe Petersson, Project Leader, OWPE@ringhals.vattenfall.se



SAP Success Story



<http://www.ringhals.se/>



SAFE NUCLEAR PLANT MAINTENANCE AND OUTAGE PLANNING WITH ASSET LIFE-CYCLE MANAGEMENT

Ringhals, located south of Gothenburg, is the largest nuclear power plant in Scandinavia with four units. Ringhals AB belongs to the Vattenfall Company. The power plant supplies most of Sweden's west coast with electricity. Its total capacity is 3,500 megawatts, approximately 15-18% of total consumption in Sweden. Since the 1st of August 2000, the Barsebäck power plant has become a subcompany of the Ringhals group. A total of five reactors generate 4,100 megawatts, and with approximately 1,500 employees, Ringhals is one of the largest power producers in the world.

Ringhals AB, Sweden